

## — FORTHCOMING PRODUCTIONS —



### Short Cuts: MA Film Screening

Directed by Daniel Castella  
Monday July 16th at 2:30pm. Screening at George IV, Chiswick High Road, W4.

Observations, remarks and glimpses at contemporary urban relationships. Obsession? Incest? Violence? Sexual infidelity... Passion and desire – life in the huge metropolis.

### Mary Barton

by Elizabeth Gaskell. Adapted by Emma Reeves (directed by Andrew Loudon)  
Thursday, 19 July - Saturday, 21 July 2007

Elizabeth Gaskell's passionate first novel is a suspenseful story of love, crime and poverty set against the backdrop of bitter class war in 1840s Manchester. It asks searching questions about capitalism and the gap between rich and poor. Beautiful Mary Barton is tempted away from her true love, Jem, by the attentions of Harry Carson, the factory owner's son. And then Jem is arrested for Harry's murder. Using traditional English folk music, Andrew Loudon and Emma Reeves' new adaptation brings Gaskell's ambitious narrative to the stage with warmth and commitment.

**For Bookings Call 020 8987 6655**

#### For Arts Ed. London

Jane Harrison                      Director School of Acting  
Adrian James                      Associate Director/ Head of MA

Program designed by [dingothief.com](http://dingothief.com)

**ArtsEd**  
presents

# La Ronde

by Arthur Schnitzler  
a new translation by Steve Gooch  
directed by Christine Kimberley

arts ed  
**MA**  
[www.artsedma07.com](http://www.artsedma07.com)

# *tart - soldier - maid - young master - wife - husband -*

## CAST



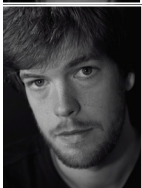
**The Tart**  
Susannah Adele



**The Soldier**  
Olalekan Lawal Jr



**The Parlour Maid**  
Tessa Longbottom



**The Young Master**  
J-P Berry



**The Young Wife**  
Sakina Ballard

**Chamber Maid**



**The Husband**  
Steve Kietzmann



**The Sweet Young Thing**  
Hannah Jayne Stretton



**The Poet**  
Shaun Morton



**The Actress**  
Teena Antia



**The Count**  
Richard Warrick

Lucy Fazey

**Arthur Schnitzler** (1862—1931) was born and brought up in Vienna. A doctor by profession whose views often matched those of Sigmund Freud his contemporary and fellow Viennese. Schnitzler started writing poems, essays and one act plays in the 1880's. In his sharp, sophisticated and beautifully observed masterpiece 'La Ronde' he represents a cross section of Viennese Society in a series of loveless sexual encounters.

Privately printed and subsequently banned it was not performed until 1920 in Berlin where riots broke out, resulting in the arrest and trial of the cast and director allegedly for obscenity.

## CREDITS

|                        |                     |
|------------------------|---------------------|
| Director               | Christine Kimberley |
| Set Designer           | Rebecca Pride       |
| Costume Designer       | Adele Keeley        |
| Lighting Designer      | Rob Gooch           |
| Production Manager     | Rob Gooch           |
| Voice Coach            | Robert Price        |
| Costume Supervisor     | Yasemin Kascioglu   |
| Costume Assistant      | James Campbell      |
| DSM                    | Kirsty Malyon       |
| ASM                    | Lottie Ormerod      |
| Set Design Assistant   | Keala Richards      |
| Construction Manager   | Paul Griffin        |
| Construction Assistant | Michael Porter      |
| Production Painter     | Anna Bruder         |
| Front of House Manager | Nathan Brine        |
|                        | Miles Mlambo        |

*sweet young thing - poet - actress - count - tart*